

FIRE SEASON RESTRICTIONS

During the summer and fall, high fire danger may limit OHV use to forest roads only. Other fire season restrictions, such as limits on campfires use, may also be in place. For information about current fire season restrictions, check our website or call:

Business Hours	After Hours Recordings
Forest Grove (503) 357-2191	(503) 359-7401
Tillamook (503) 842-2545	(503) 842-2548

NEARBY SERVICES

Nearest Hospitals:

Tillamook County General Hospital	Tuality Community Hospital
1000 3 rd Street Tillamook, OR 97141 (503) 842-4444	335 SE 8 th Avenue Hillsboro, OR (503) 681-1111

Other Services:

- Shell Gas Station, Highway 6 at milepost 42 (*Gasoline, Food, ATV Permits*)
- Glenwood Store, Highway 6 at milepost 40 (*Food*)
- Lee's Camp Store, Highway 6 at milepost 24 (*Food, Payphone*)
- Tillamook Forest Center, Highway 6 at milepost 22 (*ATV Permits, Payphone during business hours only*)

Cell phone service is unreliable across most of the Tillamook State Forest.

RECREATION WEBSITES & HOTLINE

Tillamook State Forest Website – www.oregon.gov/ODF/Tillamookstateforest

Oregon State Parks Website – www.oregonstateparks.org

Oregon ATV Website - www.oregonohv.org

Oregon State Parks ATV Hotline 877-772-3359



FOR MORE INFORMATION CONTACT

Oregon Department of Forestry

Forest Grove Office	Tillamook Office	Tillamook Forest Center
801 Gales Creek Rd Forest Grove, OR 97116 (503) 357-2191	5005 3 rd Street Tillamook, OR 97141 (503) 842-2545	45500 Wilson River Hwy Tillamook, OR 97141 (866) 930-4646

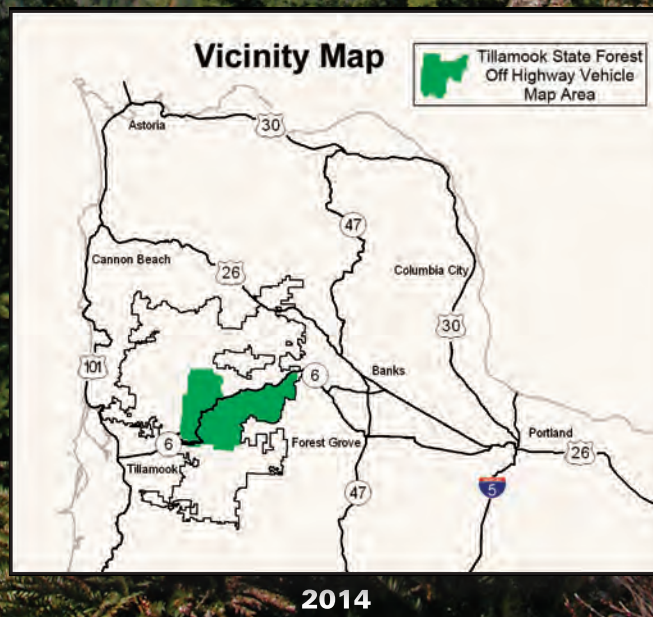
To report a fire, a crime, or an emergency CALL 911

Tillamook State Forest

Browns Camp, Jordan Creek & Diamond Mill



Off-Highway Vehicle Trail Guide



WELCOME

The Tillamook State Forest offers some of the most fun and challenging Off-Highway Vehicle (OHV) trails in the Pacific Northwest. The Browns Camp, Jordan Creek, and Diamond Mill OHV areas combine to provide more than 250 miles of riding opportunity through some of the more scenic areas of the forest.

The Browns Camp and Jordan Creek OHV areas include trails for motorcycle, quad, side-by-side and four-wheel drive enthusiasts that range from easy to extremely challenging. The trails in the Diamond Mill area are mostly technical single track trails for motorcycle use only. In addition to trails, OHV campgrounds and staging areas provide overnight and day use opportunities.

Ride and drive responsibly and enjoy your visit to the Tillamook State Forest.

CHANGING TRAIL CONDITIONS

Many of the Tillamook State Forest OHV trails are open year round. Trail conditions or difficulty levels may differ from what is shown on the map because of seasonal conditions. Individual trails may be closed at any time due to forest management operations, ongoing project work, fire danger, or to prevent trail damage. **To help protect the trails please avoid using them during periods of heavy rainfall.**

Check the trail signs, forest information boards, and the Tillamook State Forest website for trail information or for posted closures. www.oregon.gov/ODF/tillamookstateforest/pages/ohvtrailreport.aspx

HOW YOU CAN HELP

The Oregon Department of Forestry invites you to become involved in the Tillamook State Forest Off-Highway Vehicle program. The ongoing commitment of dedicated volunteers helps to promote a positive image of responsible off-highway vehicle use and to ensure the future of the sport in the Tillamook State Forest.

For more information visit our website at www.oregon.gov/ODF/Tillamookstateforest/pages/volunteerhome.aspx or contact Oregon Department of Forestry at (503) 357-2191 Forest Grove District Office or 503 842-2545 Tillamook District Office.



TREAD LIGHTLY! AND PROTECT YOUR RIDING OPPORTUNITIES

The Oregon Department of Forestry supports the Tread Lightly! program and encourages OHV enthusiasts to follow the Tread Lightly! principles when using OHV trails in the Tillamook State Forest. The trails in the Tillamook State Forest are created and maintained for your use and enjoyment by local OHV clubs and the Oregon Department of Forestry. To protect the resource and to enhance your riding experience, regulations governing OHV use on State Forest land have been adopted. Law Enforcement Officers enforce these regulations throughout the forest.

Travel Responsibly

- Stay on designated trails. Don't create side routes around obstacles.
- Respect trail designations and closures.

Respect the Rights of Others

- Share the trails. Be courteous when encountering others.

Educate Yourself

- Ride and drive within your ability. Know your limits. Know the Regulations.

Avoid Sensitive Areas

- Stay out of creeks, streams, and other waterways.
- Don't ride on road side cutbanks.

Do Your Part

- Pack out your garbage.
- Promote a positive image by following all rules and operation requirements.
- Maintain your equipment with required USFS approved spark arrestors and at the maximum 99 decibels.

tread lightly!
LEAVING A GOOD IMPRESSION



OPERATOR REQUIREMENTS AND OHV CLASSIFICATIONS

Off-Highway Vehicle riding and driving are exciting and fun sports that comes with a certain level of risk. The Oregon Department of Forestry requires that all OHV users follow state regulations and strongly encourages all motorcycle and quad riders to wear the proper protective equipment appropriate for their sport such as a helmet, goggles, gloves, chest protector, elbow pads, boots, and shin guards. Riders and drivers should operate responsibly using properly maintained and equipped vehicles.

Oregon has four classes of Off-Highway Vehicles as defined below. The operator requirements for each class of OHV can be found online at www.oregonohv.org, posted on information kiosks in the Tillamook State Forest OHV staging areas, or in the State Parks Oregon OHV Guide which is available at Tillamook State Forest District offices and at the Tillamook Forest Center.

QUADS – Class I ATV

- For vehicles 50 inches wide or less
- Dry weight of 1,200 pounds or less
- Uses handlebars for steering;
- Has a seat designed to be straddled for the operator
- Travels on three or more pneumatic tires that are six inches or more in width and has wheels with a rim diameter 14" or less.

FOUR-WHEEL DRIVES – Class II ATV

- Weighs more than or is wider than a Class I all-terrain vehicle
- Is not a Class IV all-terrain vehicle
- Is actually being operated off a highway

MOTORCYCLES – Class III ATV

- For vehicles riding on two tires and that is actually being operated off highway.

SIDE-BY-SIDES - CLASS IV ATV

- Is 65 inches wide or less at its widest point.
- Has a dry weight of 1,800 pounds or less
- Has nonstraddle seating
- Has a steering wheel for steering control
- Travels on four or more pneumatic tires that are six inches or more in width and has wheels with a rim diameter 14" or less.



ATV PERMIT REQUIREMENTS

An ATV permit sticker is required for each of these classes of OHVs in order to operate on public lands. USFS approved spark arrestors are required for Class I, Class III, and Class IV vehicles.

WHERE TO GET AN ATV PERMIT

ATV permits are available at some of the stores along Highway 6, the Tillamook Forest Center and Oregon State Parks offices. Permits cost \$10 per vehicle and are valid for two years. A vendor fee of fifty cents may be added to the price of ATV permits sold by private retailers. More details about obtaining an ATV permit are available on the Oregon State Parks ATV program webpage: www.oregon.gov/oprd/ATV/pages/permit_vendors.aspx.

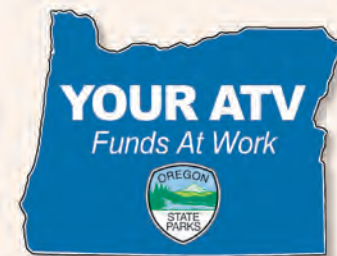
Reciprocity for Out of State Permits

Valid ATV/OHV permits that are issued in another state are accepted for use in the state of Oregon if the issuing state also honors an Oregon ATV operating permit.



YOUR ATV FUNDS AT WORK

The Oregon ATV Program allocates money obtained from the sales of ATV permits and from a designated portion of state gas taxes through grants for ATV projects across Oregon. In the Tillamook State Forest, ATV Funds are used to maintain and develop OHV staging areas, trails, and trail bridges and to purchase trail signs and purchase trail maintenance equipment. ATV grants also provide partial funding for law enforcement officers that patrol the forest.



ATV & MOTORCYCLE SAFETY COURSES

On-line Safety Training (required for all Class I and III operators)

The Oregon Parks and Recreation Department ATV Safety Education Course is online at www.oregonohv.org and it's free! This course provides safety tips for riding in Oregon's dunes, deserts and forests as well as training on trail etiquette, riding ethics and environmental concerns. Passing the online ATV Safety Education Course is an easy way to receive the ATV Safety Education Card required for all operators of quads and motorcycles. Previous ATV Safety Institute or Motorcycle Safety Foundation Operator Permit holders will also need to take this course. For youth under the age of 16, this course is step one. Step two is hands-on training.

Hands on Training (required for operators 15 and under)

ATV and Motorcycle Safety courses are available to help develop or evaluate rider skills. For information about Motorcycle and ATV Safety Training courses check the Oregon State Parks website at www.oregon.gov/oprd/ATV/pages/atv_safety.

If you have questions about the ATV Safety Education Card call the ATV toll Free hotline at 877-772-3359.



Tillamook State Forest Off-Highway Vehicle Trail Guide

ID #	Name	Difficulty
1	Roger's Camp Road	
2	Firebreak One	
3	Crooked Bridge	
3a	Marks	
4	Powerline	
4b	Happy Meal	
4c	Little Rubicon	
5	Blockbuster	
6	Browns Powerline	
7	Clydes	
8	Julies	
9	Sidewinder	
10	University Firepower	
11	Elmers	
12	Gummy Worm	
13	Cedar Tree	
14	Firebreak Five	
14r	Crushers	
15	Island	
16a	Saddle Up	
16b	Dog Leg	
16c	Waldos Way	
16d	Airplane Hill	
16e	Cedar Way	
17	7-Up	
18	Hogs Back	
19	Tomans Knob	
20	Hoodraiser	
21	Chute	
22	Back to Back	
23	Marianna's Trench	
24	Bates Road	
25	Elliott Creek	
26	Ample and Alluring	
27	Ben Smith Loop	
28	Archers Firebreak	
28a	Rocky Up Hill	
28b	Can Opener	
28c	Waterfall	
28d	Rock Garden	
29	Morrell's Blaze	
30	Bales Creek	
31	Benny Hill	
32	Endless Bummer	
33	Chainbreaker	
34	Backup	
35	Buzzards Point	
36	Rogers Rd.	
37	Stick in The Nose	
38	Maddogs Pumpkin Patch	
39	Spaur Creek	
40	Firefox	
41f	Firefox	
42	Hembre Lookout	
43	Military	
44	Quarry	
45	Log Jam	
46	Reids Ridge	
47	Deer Quarry	
48	Arrowhead	
49	Ferngully	
50	Bat Bridge	
51	K Thumb	
52	Beaverslide	
53	BFR	
54	Black Diamond	
55	Black Water 50	
56	BPA	
57	Pink Ribbon	
58	Stage Rd.	
59	Bungee Rd.	
60	Cedar Hillclimb	
61	Cedar Jones	
62	Cedar Ridge	
63	Diamond View	
64	Coast Range	
65	Columaster	
66	Cramlets Cliff	
67	Cut Off	
68	DC	
69	Cedar Fence	
70	Deer Fence	
71	Odins Ridge	
72	West Fork Bypass	
73	East Tower	
74	Elk Willow	
75	Frankenstien	
76	Payne	
77	Ginger	
78	Georges Loop	
79	Highway Access	
80	Piggyback	
81	MC	
82	Jones Creek Rd.	
83	Jordan Creek	
84	Kids Loop	
85	Denny's	
86	Parking Lot West	
87	Katie's	
88	Marvelous Mainline	
89	Maryanne	
90	Mikes	
91	Mongos Canyon	
92	Doughboy Meets Dirt	
93	Muesial Creek	
94	North Tower	
95	Old Cedar Creek	
96	One Way	
97	Outback	
98	Lyda Hill	
99	Elk Bellow	
100	Salans Slide	
101	Purple Bug Stump	
102	Radio Silence	
103	Pine Tree	
104	Cedar Hump	
105	Relay Ridge	
106	Rickety Bridge	
107	Walt n Gene's	
108	Plastic Downhill	
109	Tri Loop	
110	Diamond Mill Ridge	
111	Schwarz's	
112	Skidmark	
113	South Tower	
114	Spiny Ridge	
115	Sticks and Stones	
116	Stumpy	
117	Summit	
118	The Continental	
119	Thin Wolf	
120	Tommy	
121	Truck Dent	
122	Waterlog	
123	West Tower	
124	Wolf Foot	
125	Wolf Point	
126	Potato Ridge	
127	Hembre Ridge	
128	Barney Rubble	
129	Fawn Holly	
130	Kansas Creek	
131	Powerline 2	
132	Muesial Ridge	
133	Cedar Ridge Bypass	
134	Spaur Ridge	

